

## PARTNERS...

A newsletter for the partners and providers of Early Detection Works,  
Kansas breast and cervical cancer screening and detection program



### Regional Nurses

#### Northeast

Linda Redding, RN  
785-832-1701

#### North Central

Karla Schmidt, RN  
785-827-9639

#### South Central

Sherry Haworth, RN  
316-660-7332

#### Southeast

Stephanie Thompson, RN  
620-235-7136

#### West

Shelly Nelson, RN  
Toll-Free  
1-877-275-5302

### Early Detection Works

Toll-Free Hotline  
1-877-277-1368

### Director's Message

The grant year for services provided from July 1, 2008, through June 30, 2009, has closed. Bills for services provided have been paid, with a few limited exceptions (missing data, etc.). No new bills will be accepted for services provided last fiscal year. Per your contracts, you may not bill clients for services that should have been covered by the Early Detection Works Program.

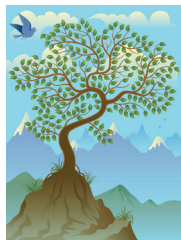
Several observations from the now closed year... first, we enrolled more than 8,000 women but received forms for less than 5,800. We are currently studying this huge 'no show' rate to identify areas of the state with the highest rates. Enrollment staff ask women which clinic they plan to use, and we are comparing 'no-shows' with specific clinics to identify any clinic use issues. Additionally, we received well over 60 percent of the billing for last fiscal year on or after August 15. Please make every effort to submit your bills as soon as possible as stipulated in your contract (45 days from the service) to ensure that your bills are paid in a timely manner, and to assist us in fiscal management.

The Comprehensive Cancer Control and Prevention Plan for Kansas is currently under revision. The new document will focus on accomplishments during the past five years as well as development of new or expanded initiatives for 2010 through 2015. The Kansas Cancer Partnership workgroups need new members; if you are interested, please e-mail Patrice O'Hara at pohara@kdheks.gov. Workgroups include public policy, public education, professional education, research and data, patient navigator and access to care, and survivorship and end of life. Most meetings are held via monthly conference calls with a toll free number provided.

An upcoming comprehensive cancer media initiative called "Talking Turkey" focuses on family discussions surrounding advance care directives during the holidays. If you are interested in knowing more about advance directives, please visit the Center for Practical Bioethics website at [www.practicalbioethics.org](http://www.practicalbioethics.org) and click on "Caring Conversations."

*Janet Neff, Director*

*Cancer Prevention and Control Program*



Help us "GO GREEN"! If you still receive a paper copy of this newsletter, please send your e-mail address to [bvancortlandt@kdheks.gov](mailto:bvancortlandt@kdheks.gov) so future copies of this newsletter may be sent to you electronically!

[www.preventionworkskansas.org](http://www.preventionworkskansas.org)

Early detection can save your life.

call to see if you qualify for a free screening

early  
detection works

Toll Free:  
1-877-277-1368  
[www.preventionworkskansas.com](http://www.preventionworkskansas.com)

## Minimum Data Elements (MDEs)

A recent letter from CDC stated: *“Congratulations! Kansas’ Breast and Cervical Cancer Early Detection Program successfully met all of the core program performance indicators from the data quality indicator guide in your April 2009 MDE submission.”* It also stated thanks for *“preparation and submission of accurate and timely data”* and explained the importance of the information for assessing program quality. Indicators of program performance are used to monitor and report success in meeting program policy and standards for service delivery. For more information visit: <http://www.cdc.gov/cancer/nbccedp/data/>.

### **Kansas Cervical Cancer Screening\* Five-Year Summary, 1/2003 to 12/2007**

Pap tests provided - 19,539

Abnormal Pap tests - 445 (2.3%)

Cervical cancers/precursor lesions detected - 262

(CIN-1 or LSIL - 161; CIN-2 or worse - 101)

\*NBCCEDP-funded Pap tests. An additional 557 women were diagnosed with LSIL, HSIL, CIN-1, CIN-2, CIN-3, CIS, or invasive cervical cancer through the NBCCEDP following a Pap test funded through another source.

### **Kansas Breast Cancer Screening\* Five-Year Summary, 1/2003 to 12/2007**

Mammograms provided - 15,376

Abnormal mammograms - 2,939 (19.1%)

Breast cancers detected - 137

\*NBCCEDP-funded mammograms provided to women age 40 and older. An additional 21 women were diagnosed with CIS (other), DCIS, or invasive breast cancer through the NBCCEDP following a mammogram funded through another source.

**Thank You** to the contractors and subcontractors of the EDW program for your major role in providing breast and cervical screening and diagnostic services to women in need across Kansas. EDW recognizes your valuable time and appreciates the effort you expend contributing to the success of early detection screening through the submission of the required EDW forms. Receipt of these forms in a timely manner assures that clients with abnormal results receive the recommended follow-up diagnostic tests as soon as possible.

Appreciation also is extended to the statewide Regional Nurses who provide the necessary Case Management to all EDW enrolled women. This assures timely follow-up of incomplete forms and abnormal results, and that eligible clients diagnosed with breast or cervical cancer are referred appropriately for treatment.

## Colorectal Cancer Campaign

Colorectal cancer has the second highest incidence and morbidity rate in Kansas for men and women, behind only lung cancer. Yet, it is a highly preventable and treatable cancer if found in its precancerous or early stage. From 1997-2005 more than 13,400 individuals in Kansas were diagnosed with colorectal cancer. During that same period 4,937 died of the disease. Colorectal cancer can be detected through a number of tests including:

- Fecal Occult Blood Test (FOBT) - detects blood in the stool
- Flexible Sigmoidoscopy - checks the lower part of the colon
- Colonoscopy - checks the entire colon and if a polyp is found the doctor can remove it
- Virtual colonoscopy - a type of advanced CT scan of the colon

The Kansas Cancer Partnership (KCP) embarked on an education and awareness project the past two years to inform the public about the importance of screening for colorectal cancer. Highlights include:

- 25 centers participated in 2009, up from the initial 12 in 2008
- 3,264 FOBT kits distributed with a 37% return rate (national average is 40%)
- 111,500 printed materials distributed to KCP partners (posters, brochures and fact sheets)
- 13,340 colorectal cancer awareness ads run on TV, radio and newspapers in Kansas
- Calls requesting colorectal information to the 1-800-4-CANCER line increased from 77 in 2008 to 114 in 2009

For information about the 2010 Campaign, please contact Patrice O’Hara, Cancer Program Manager at [pohara@kdheks.gov](mailto:pohara@kdheks.gov) or 785-296-1228.

This is personal.

“My mother was the cornerstone of our family. When she was diagnosed with colon cancer, it was like the whole family got cancer. She died when she was only 56. Let my heartbreak be your wake-up call.”

Terrence Howard, actor/musician



## November is Lung Cancer Awareness Month

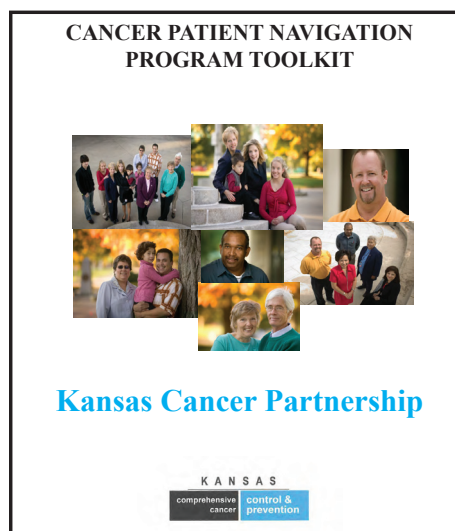
More people die from lung cancer than any other type of cancer. The most important thing people can do to prevent lung cancer is to never start smoking or quit if they currently do smoke. The majority of Kansas's 435,723 adult tobacco users want to quit but have been unsuccessful. Whether someone wants to quit now or get information for a loved one, the Kansas Tobacco Quitline, 1-800-QUIT-NOW (1-800-784-8669) can help. The 24-hour toll-free Quitline provides counseling, support materials and referral for tobacco use cessation assistance based on an individual's readiness to quit.



Join thousands of people who quit smoking for a day and possibly a lifetime during the American Cancer Society **Great American Smokeout** on Thursday, November 19!

## Cancer Patient Navigation Program Toolkit

Copies of the Toolkit are now available to be downloaded at [www.cancerkansas.org](http://www.cancerkansas.org) or may be ordered by e-mailing your request to Barbara VanCortlandt, [bvancortlandt@kdheks.gov](mailto:bvancortlandt@kdheks.gov).



## Cancer Information Service Partnership Program

Many of those working in the cancer field are familiar with the Cancer Information Service (CIS) and the partnership program that helps reach those who may have limited access to health information. The CIS also supports the 1-800-4-CANCER toll free line which provides evidence-based information to the public and the research program which advances health communication practices.

On January 14, 2010, the CIS Partnership Program will be incorporated by the National Cancer Institute (NCI) into an enhanced National Outreach Network. For those of you who have used services provided by CIS during the past 33 years, particularly in the Heartland Region, that contract will not be renewed. However, the toll-free number will continue to remain accessible and the NCI is determining the possibility of a research component. The NCI also will continue to develop and provide free educational materials for cancer patients and their families as a part of their commitment to disseminate cancer information.

The newly announced National Outreach Network plans to incorporate its outreach and cancer information dissemination activities as a key component in the institute's community-based research programs. Information about the ongoing efforts of NCI's progress can be found at: <http://cis.nci.nih.gov/ncioutreach.html>.

## Contractor/Subcontractor Forms

Each year the EDW program sends out a mailing that includes the new provider reimbursement rates for the upcoming fiscal year. Contractors and Subcontractors are asked to submit a new "Attachment B" annually, stating what services they cover, and what their usual & customary charges for those services are. They also receive an "Attachment C" that lists the services EDW will pay for and how much will be paid for each.

PDF versions of the forms can be found on-line at: [http://www.kdheks.gov/edw/download/Attachment\\_B.pdf](http://www.kdheks.gov/edw/download/Attachment_B.pdf)  
[http://www.kdheks.gov/edw/download/Attachment\\_C.pdf](http://www.kdheks.gov/edw/download/Attachment_C.pdf)  
 A version of Attachment B that can be submitted on-line can be found at: [http://www.kdheks.gov/edw/attachment\\_b.htm](http://www.kdheks.gov/edw/attachment_b.htm)



**2009 Summit**  
**Cultivating Healthy Kansans**  
A Leadership Summit on Health Promotion & Chronic Disease Prevention  
December 1st, 2nd & 3rd  
2009

Topeka Capitol Plaza Hotel  
&  
Maner Conference Center

---

For Summit Information  
[www.cultivatinghealthykansans.org](http://www.cultivatinghealthykansans.org)  
785-296-8916

Early Detection Works  
Bureau of Health Promotion  
Kansas Department of Health & Environment  
1000 SW Jackson Street, Suite 230  
Topeka, KS 66612-1274  
264-32