

## PARTNERS...

A newsletter for the partners and providers of Early Detection Works, Kansas breast and cervical cancer screening and detection program



### Regional Nurses

#### Northeast

Linda Redding, RN, BSN  
785-832-1701  
lredding@kdheks.gov

#### North Central

Karla Schmidt, RN  
785-827-9639  
krschmidt@kdheks.gov

#### South Central

Sherry Heinel, RN, BSN  
316-337-6110  
sheinel@kdheks.gov

#### Southeast

Stephanie Thompson, RN, MSN  
620-235-7136  
sthompson@crawfordcohd.org

#### West

Shelly Nelson, RN  
Toll-Free  
1-877-275-5302  
snelson@ummam.org

### Early Detection Works

Toll-Free Hotline  
1-877-277-1368

www.preventionworkskansas.org

### FROM THE DIRECTOR

Welcome to 2011! We hope you had a safe and happy holiday season!

The new year provides us a wonderful opportunity to thank you for your participation in the Early Detection Works (EDW) Program. You are a valued partner in our collective efforts to provide eligible women appropriate breast and cervical cancer screening and diagnostic services. We look forward to continuing our work with you for yet another year.

Please know we are here to support your efforts. The EDW regional nurses are available and can assist you with most questions; please feel free to contact them at your leisure. Rita Davenport serves as the clinical lead for the EDW program. Rita may be reached at rdavenport@kdheks.gov or 785- 291-3738. I will remain the Acting Director for both the Breast and Cervical and Comprehensive Cancer Programs until a new director is hired. If I can be of assistance, please feel free to contact me at bskidmore@kdheks.gov, 785-368-8264.

All the best,

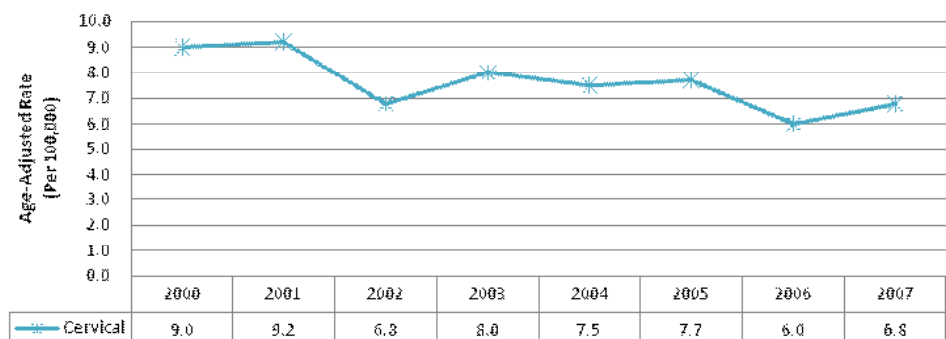
**Brandon Skidmore**

### JANUARY CERVICAL HEALTH AWARENESS MONTH



Cervical cancer was once the number one cancer killer of women, but during the past 50 years in the U.S. the number of new cases and deaths has declined 75 percent. This is largely because of the widely available, reliable Pap test. An estimated 4,210 women died from cervical cancer in the U.S. last year. In Kansas women, cervical cancer accounts for approximately two percent of all cancer, with an average of 107 new cases diagnosed each year. About 33 Kansas women die of cervical cancer annually.

Age-Adjusted Incidence Rate of Cervical Cancer Among Kansas Females, 2000-2007

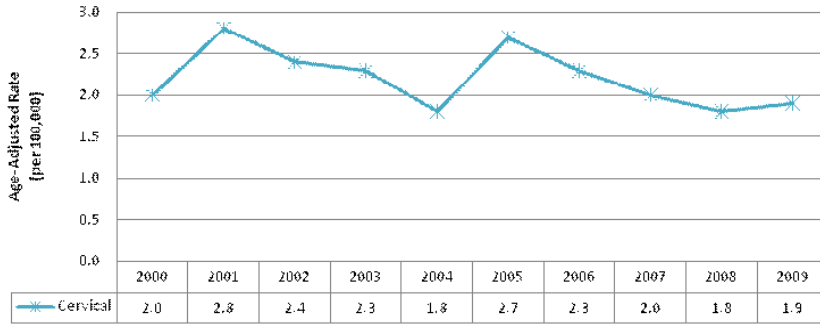


Source: Kansas Cancer Registry, 2000-2007

From 2000-2007, the age-adjusted incidence rate in Kansas females declined slightly. In 2007, the age-adjusted incidence rate was 6.8 cases per 100,000 Kansas women.

## CERVICAL CANCER IN KANSAS

Age-Adjusted Mortality Rate for Cervical Cancer Among Kansas Women, 2000-2009



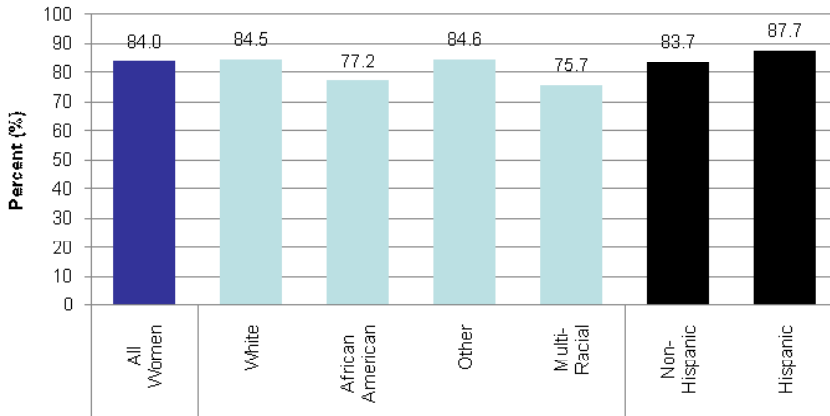
Source: Kansas Information for Communities, 2000-2009

From 2000-2009, the age-adjusted mortality rate remained about the same. In 2009, the age-adjusted mortality rate was 1.9 deaths per 100,000 Kansas women.

KDHE encourages Kansas women to schedule a well-woman checkup in recognition of January Cervical Health Awareness Month.

“More African American and Hispanic women get cervical cancer and are diagnosed at later stages of the disease than women of other races or ethnicities, possibly because of decreased access to Pap testing or follow-up treatment,” said Dr. Jason Eberhart-Phillips, State Health Officer and Director of Health for KDHE. “It is important for women of all races and ethnicities to seek early detection and treatment.” In Kansas, African American women die of cervical cancer at a rate twice that of white women.

Percent of Kansas Women Who Reported Having a Pap Test in the Preceding 3 years



Source: 2008 Kansas BRFSS, Bureau of Health Promotion, KDHE

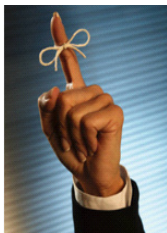
In 2008, about 84% of Kansas women aged 18 and older had a Pap smear in the preceding 3 years.

Pap smears should be given yearly starting three years after a woman becomes sexually active, or no later than age 21 years. The tests can be given every two years if a liquid-based kit is used, and the frequency of testing can be reduced to every 2 to 3 years in women aged 30 years and older if they have had three normal tests in a row.

Human Papilloma Virus vaccination is recommended for girls at age 11 or 12 years. The vaccine targets strains of HPV that cause about 70 percent of cervical cancer cases. Parents are encouraged to talk with their daughter’s health care provider for more information about the vaccine.

Early detection can save your life.

call to see if you qualify for a free screening  
**early detection works**  
 Toll Free: **1-877-277-1368**  
[www.preventionworkskansas.com](http://www.preventionworkskansas.com)



### ATTENTION ALL EDW PROVIDERS!

If you move, close, have a new name, new FEIN or any other business change, please inform us in writing by sending a letter addressed to EDW, Cancer Program, 1000 SW Jackson, Suite 230, Topeka, KS 66612.



What Cancer Patients, Survivors, and Caregivers Should Know About the Flu

<http://www.cdc.gov/cancer/flu/#1>

## CANCER SURPASSES HEART DISEASE AS #1 CAUSE OF DEATH IN KANSAS

The Kansas Department of Health and Environment (KDHE) announced the release of the 2009 Annual Summary of Vital Statistics, <http://www.kdheks.gov/hci/annsumm.html>. "This report serves as a baseline document that will be used to assess the health of Kansans," said John W. Mitchell, Acting KDHE Secretary.

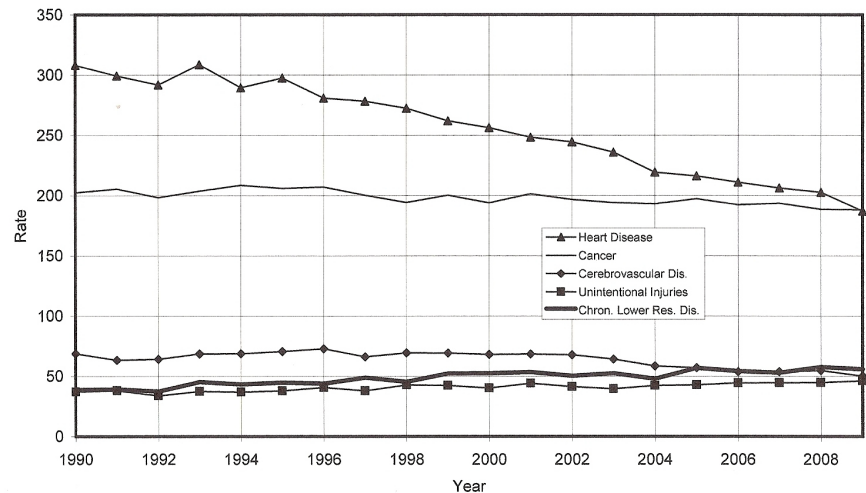
The age-adjusted death rate for heart disease dropped 6.3 percent from 2008 to 2009, a statistically significant decrease. Thus for the first time in recent history, cancer passed heart disease as the leading cause of death in Kansas in 2009.

"It's certainly too early to tell whether cancer surpassing heart disease as the leading cause of death will become a trend, but it is an area we will continue to watch," said Dr. Jason Eberhart-Phillips, State Health Officer and director of KDHE's Division of Health. "Both causes of death have been declining in recent years, with mortality from heart disease falling faster than mortality from cancer."

Call 785- 296-8627 for additional data.

### Death Rates for Selected Leading Causes of Death

Kansas, 1990-2009



Rate per 100,000 Population  
Residence Data

## MAMMOGRAPHY FOR WOMEN WITH DISABILITIES: TRAINING FOR THE MAMMOGRAPHY TECHNOLOGIST

Mammography for Women with Disabilities:  
Training for the Mammography Technologist



Breast Health Access for Women  
with Disabilities (BHAWD)

Alta Bates Summit Medical Center, Rehabilitation Services Department  
A self-learning activity approved for Category A credit by the ASRT  
©2009, Alta Bates Summit Medical Center. All rights reserved.

Women with disabilities have long constituted an invisible population subset for women's health. National data shows that women with disabilities receive consistent mammograms less often than the rest of the population. Breast Health Access for Women with Disabilities (BHAWD) and mammography technologists have designed this self-learning course to assist you in providing quality mammography services for women with disabilities. This course has been approved for 1.0 CE Credits by the ASRT.

The learning goals of BHAWD's DVD and booklet self-learning module "Mammography for Women with Disabilities: Training for the Mammography Technologist" are:

1. To recognize the need for mammography screening and education for women with disabilities;
2. To identify barriers to receiving regular mammograms;
3. To identify solutions to remove barriers;
4. To learn adapted positioning techniques and use of supportive equipment; and
5. To increase knowledge of effective communication strategies.

The self-learning module includes 1 DVD, accompanying booklet, and 1 post-test. The cost is \$32 plus shipping and handling. Post-test grading and certificate of completion are included. An additional test can be ordered for the 1.0 CE for \$15.50. <http://www.bhawd.org/sitefiles/DVD.html>

Resource provided by Jamie Simpson, KDHE Disability Program Coordinator, [jsimpson@kdheks.gov](mailto:jsimpson@kdheks.gov)

## MARCH COLORECTAL CANCER AWARENESS MONTH



PREVENTABLE, TREATABLE, BEATABLE is a major theme for the Kansas 2011 Colorectal Cancer Awareness Campaign. Colorectal cancer has the second highest incidence and morbidity rate in Kansas for men and women, behind only lung cancer. In 2007, 1,367 Kansans were diagnosed with colorectal cancer, and in 2009, 490 Kansans died of the disease.

Some studies suggest that people may reduce their risk of colon cancer by increasing physical activity, eating fruits and vegetables, limiting alcohol consumption and avoiding tobacco. Overall, the most effective way to reduce the risk is through colorectal cancer screening tests. If everyone aged 50 or older had regular screening tests, as many as 60% of deaths from colorectal cancer could be prevented.

Colorectal cancer is highly preventable and treatable if found in its precancerous or early stage. Tests to help detect colorectal cancer include Fecal Occult Blood Test (FOBT), Flexible Sigmoidoscopy and Colonoscopy. Even though many insurance plans and Medicare help pay for screening, in 2008, 38.3 percent of Kansans 50 years or older had never had a sigmoidoscopy or colonoscopy and 76.9 percent had not received an FOBT in the preceding two years. People are encouraged to speak with their health care provider about when to begin screening and what test is best for them.

Visit <http://www.cancer.gov/features/colorectalcancer2010> for more information from the National Cancer Institute and <http://www.cdc.gov/cancer/colorectal/sfl/> for information about CDC's "Screen for Life" campaign. For more information about Kansas cancer resources and information, visit [www.cancerkansas.org](http://www.cancerkansas.org).

**Early Detection Works**  
**Bureau of Health Promotion**  
**Kansas Department of Health & Environment**  
**1000 SW Jackson Street, Suite 230**  
**Topeka, KS 66612-1274**  
**264-32**