

Kansas Comprehensive Cancer Control and Prevention: Where we are Today



K A N S A S

comprehensive
cancer

control &
prevention

History of Comprehensive Cancer Control (CCC)

- 1999- Planning process began
- 2002- Part I Plan published
- 2003- Partnership reorganized
- 2004- Kickoff meeting and work began on Phase II
- 2005- CCC Plan II published



Expanding CCC

As a result of Phase I planning efforts focused on the burden of cancer in Kansas-

- KDHE received funding in 2004 to develop a comprehensive plan to address cancer in the state
- Kick off meeting in March 2004
- Progress meeting in May 2004
- Two-day report out in June 2004

K A N S A S

comprehensive
cancer

control &
prevention

Phase II Planning

The Kansas Comprehensive Control and Prevention Plan- organized recommendations around the Continuum of Care:

- Prevention
- Screening/Early Detection
- Treatment
- Survivorship and End-of-life

Comprehensive Cancer Plan

Published in March 2005

- Media event and announcement by Governor Sebelius on March 25
- Partnership meeting that day to begin implementation
- Six workgroups formed
- Town hall meetings across the state in summer 2005

K A N S A S

comprehensive
cancer

control &
prevention

Kansas Cancer Partnership

*2004- 45 individuals in workgroups
developing the Plan*

*2008- 185 individuals from a network of
public and private organizations who
provide leadership in the Partnership*

K A N S A S

comprehensive
cancer

control &
prevention

KCP Mission...

- **Prevent** cancer
- **Screen** for the disease
- Provide prompt and thorough **treatment**
- Ensure **survivors** lead productive and healthy lives
- Provide compassionate care and pain management for those at the **end-of-life**



K A N S A S

comprehensive
cancer

control &
prevention

The KCP approach...

Six workgroups working on implementation:

- Patient Advocacy/Access to Care
- Policy Issues
- Professional Education
- Public Education
- Research and Data
- Survivorship/End of Life

K A N S A S

comprehensive
cancer

control &
prevention

What is the burden of cancer in Kansas?

- 12,000 new cancer cases each year
- 5,000 deaths each year
- Medical costs
- Time lost
- Family burden



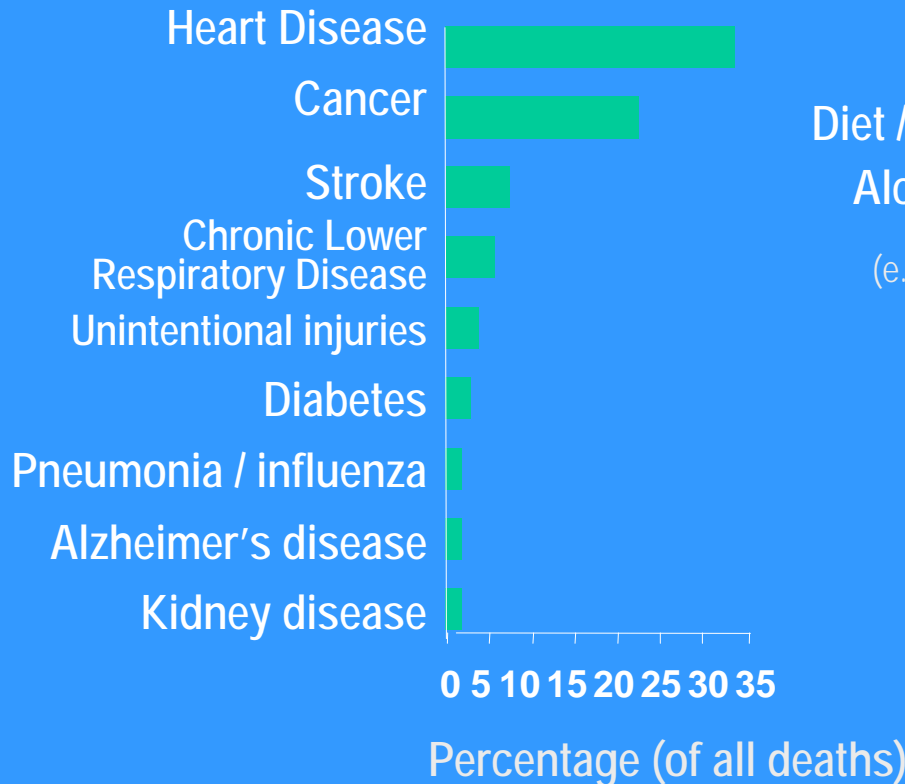
K A N S A S

comprehensive
cancer

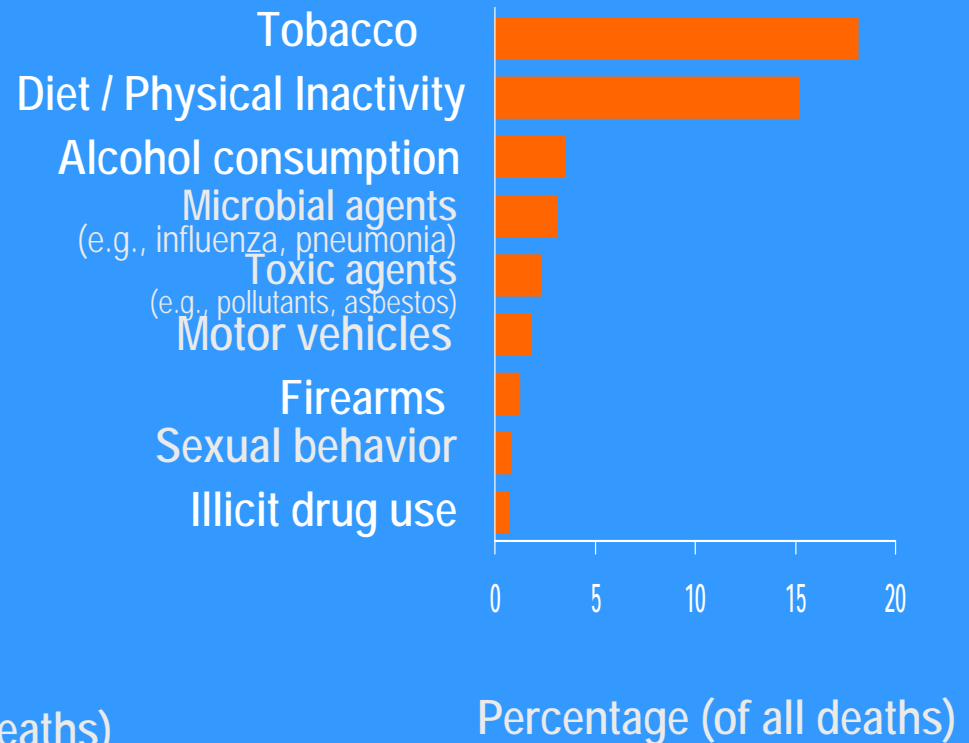
control &
prevention

Health Problems in the U.S.

Leading Causes of Death*
United States, 2000

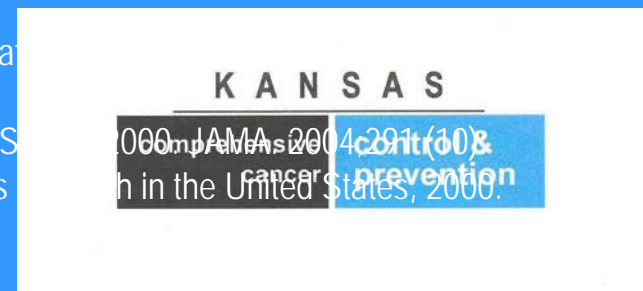


Actual Causes of Death†
United States, 2000

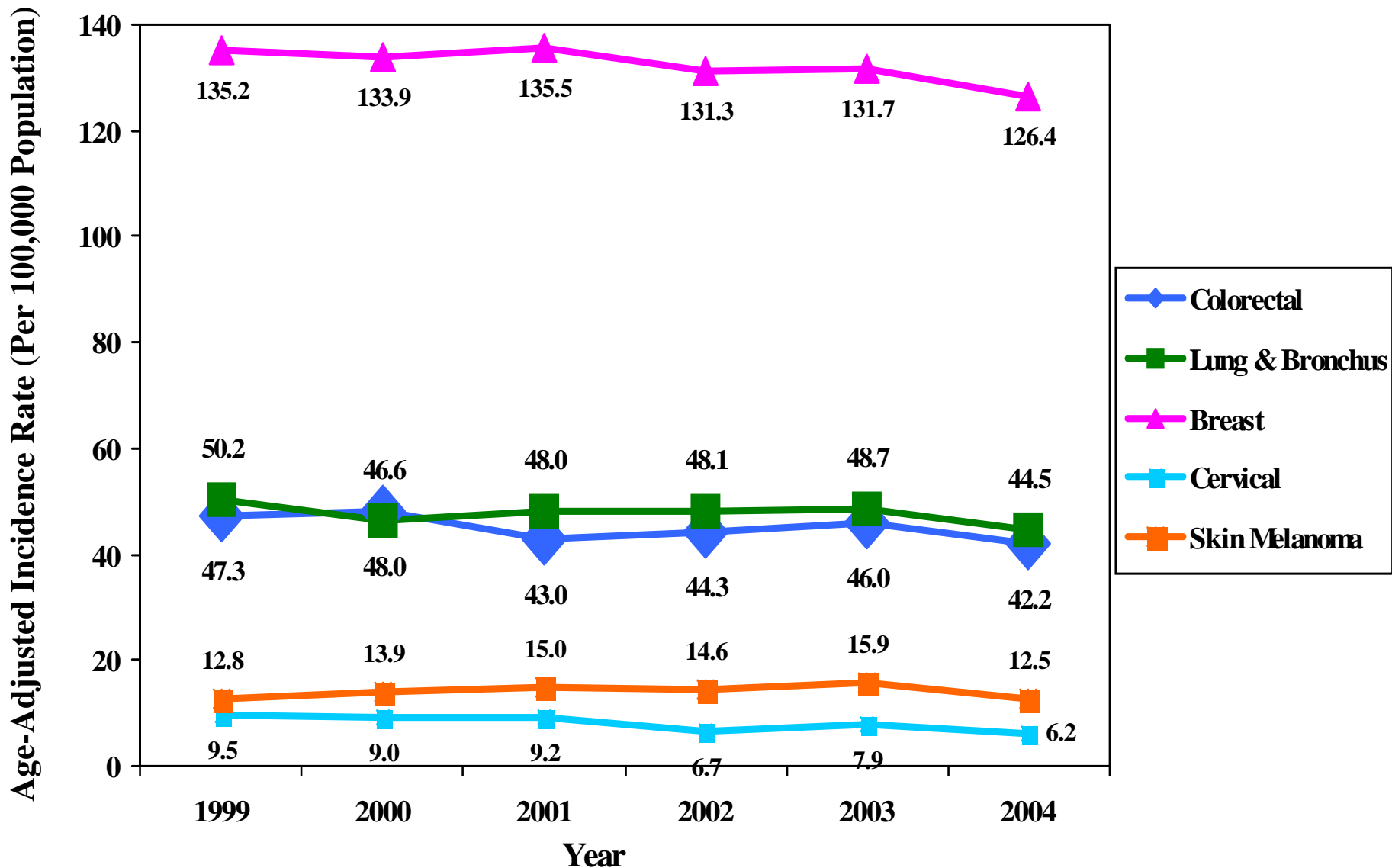


*Minino AM, Arias E, Kochanek KD, Murphy SL, Smith BL. Deaths: final data for 2000. *Natl Vital Stat Rep*. 2004;50(15):1-20.

†Mokdad AH, Marks JS, Stroup DF, Gerberding JL. Actual causes of death in the United States. *JAMA*. 2004;291(10):1238-1246. Mokdad AH, Marks JS, Stroup DF, Gerberding JL. Correction: Actual Causes of Death in the United States, 2000. *JAMA*. 2005;293(3):293.



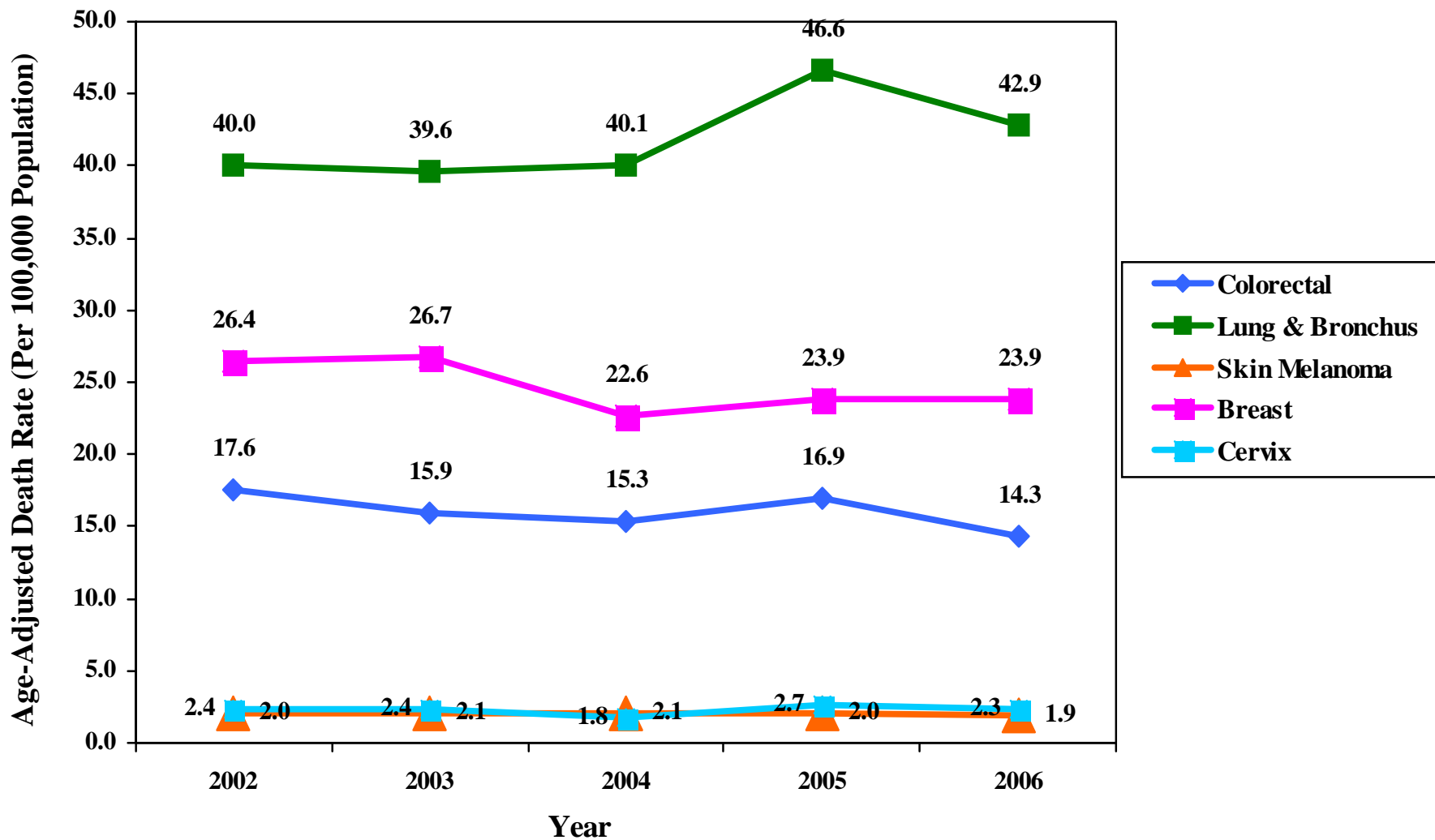
Age-Adjusted Invasive Cancer Incidence Rates By Primary Site Among Female Residents in Kansas (1999-2004)



Rates are per 100,000 Female Population and age-adjusted to the 2000 U.S. Standard Population.

Data Source: Kansas Cancer Registry

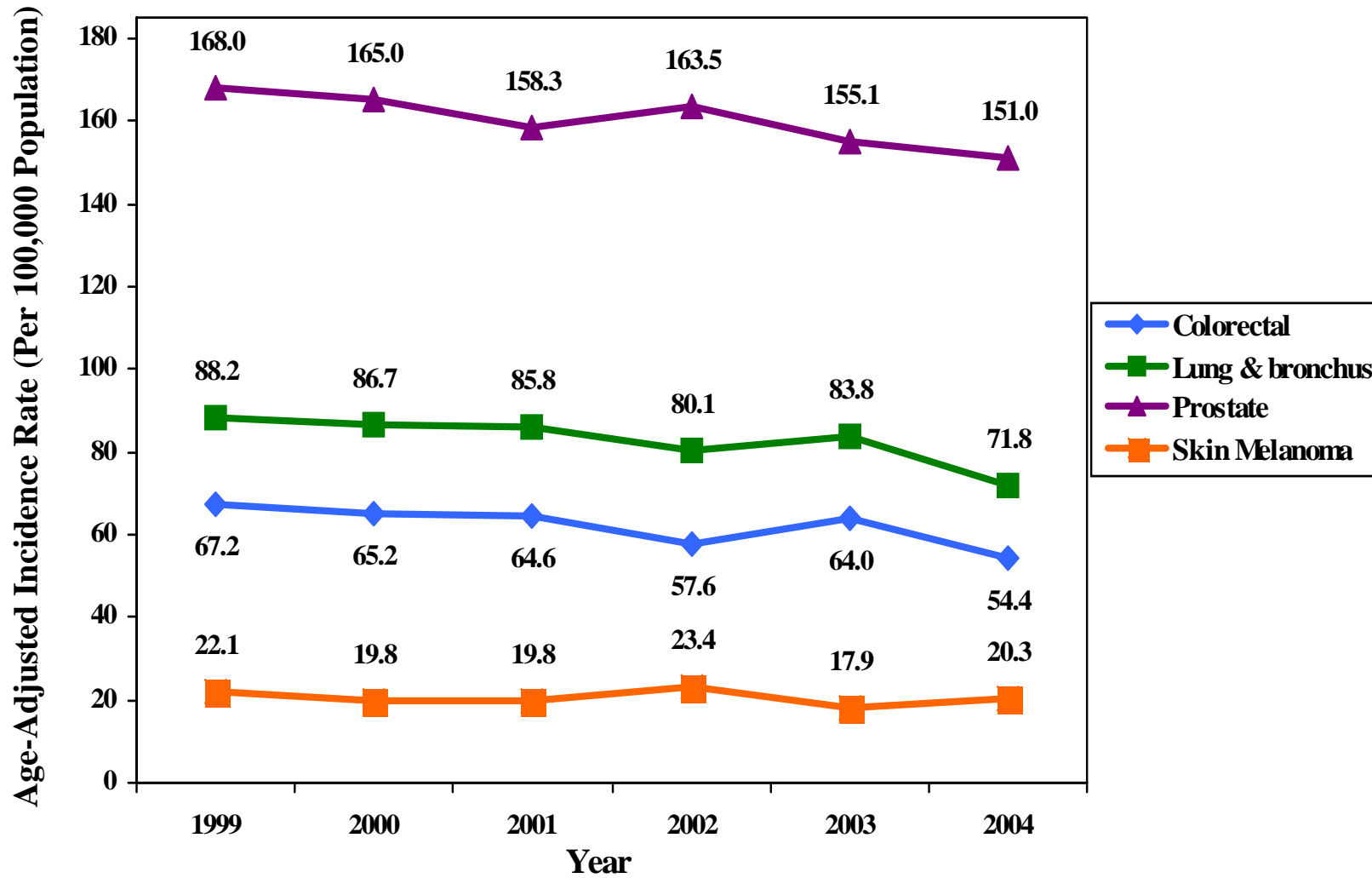
Age-Adjusted Cancer Death Rates By Site Among Female Residents in Kansas (2002-2006)



Rates are per 100,000 Female Population and age-adjusted to the 2000 U.S. Standard Population.

Data Source: Kansas Vital Statistics database, Center for Health and Environmental Statistics, Kansas Department of Health & Environment.

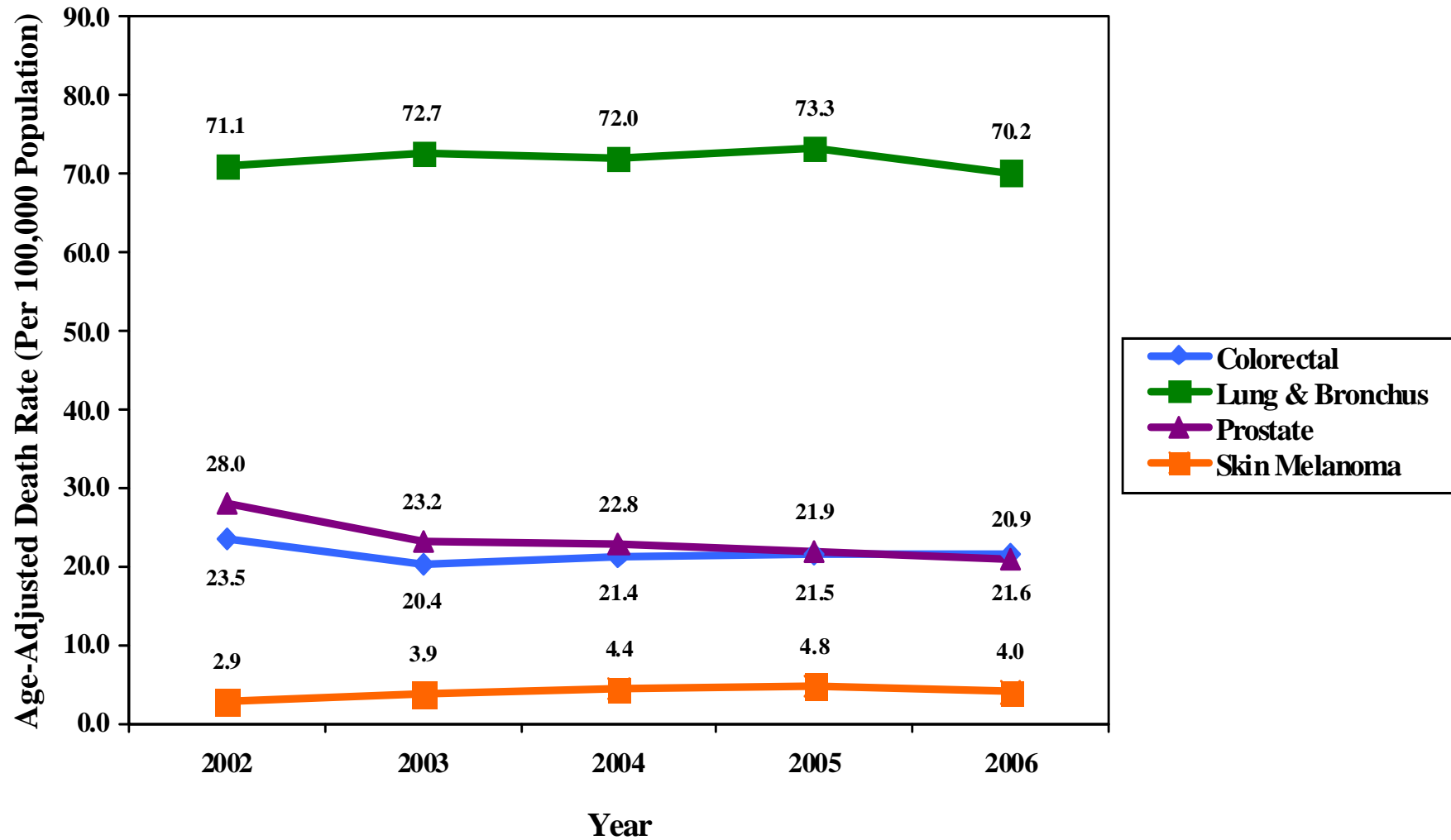
Age-Adjusted Invasive Cancer Incidence Rates By Primary Site Among Male Residents in Kansas (1999-2004)



Rates are per 100,000 Male Population and age-adjusted to the 2000 U.S. Standard Population.

Data Source: Kansas Cancer Registry

Age-Adjusted Cancer Death Rates By Site Among Male Residents in Kansas (2002-2006)



Rates are per 100,000 Male Population and age-adjusted to the 2000 U.S. Standard Population.

Data Source: Kansas Vital Statistics database, Center for Health and Environmental Statistics, Kansas Department of Health & Environment.

Cost of Cancer....

In the U.S. - \$189.5 billion dollars

– \$64.2 billion for direct medical expenses

– \$16.2 billion in indirect morbidity costs

– \$109 billion in lost worker productivity

In KANSAS the cancer cost is estimated at \$1.6 billion annually including direct medical costs, cost of lost productivity due to illness and cost due to premature death.

K A N S A S

comprehensive
cancer

control &
prevention

Timeline 2005

- Statewide listening tours-Summer 2005
- Begin work on patient navigator program
- CCC Meeting- Sept.2005
- Cancer training for HR professional
- Develop web site
- Cancer questions in BRFSS
- 10 communities working on clean indoor air
- Develop provider data collection screening tool

K A N S A S

comprehensive
cancer

control &
prevention

Timeline 2006

- Collect data from facilities about screening and treatment
- Increase awareness of clinical trials and work for insurance coverage
- Survey nursing and medical schools and coordinate curriculum
- Comprehensive media campaign

K A N S A S

comprehensive
cancer

control &
prevention

Timeline 2006- Continued

- Support school wellness policies
- Develop plan to increase resources
- Three communities implement tobacco cessation programs
- Increase enrollment in screening research trials
- Five communities adopt clean air ordinances

K A N S A S

comprehensive
cancer

control &
prevention

Timeline 2007

- Advocate Legislature and Congress to mandate colorectal screening
- Develop statewide information exchange session for survivorship
- Raise cigarette tax to \$1.25 per pack
- Begin education efforts in 10 communities
- Develop speakers bureau

K A N S A S

comprehensive
cancer

control &
prevention

Timeline 2007-Continued

- Ten schools/communities enact policies to support UV protection for skin cancer
- Enter partnership with worksites to implement cancer programs
- Explore tax credits to business for cancer survivor programs

K A N S A S

comprehensive
cancer

control &
prevention

Timeline 2008

- Disseminate cancer prevention strategies to health professionals
- Five communities implement radon mitigation regulations for new construction
- Ten schools enact changes in vending machine foods
- Study to assess quality of screening services

K A N S A S

comprehensive
cancer

control &
prevention

KCP Accomplishments:

- Surveyed 57 Cancer Centers in the state
 - Provided firm partnership to establish and expand programs across the state
- Surveyed educational needs of 41 nursing schools and provided cancer materials for use in their curriculums
- Established a series of news releases and newsletter articles for the six cancers distributed during respective months

K A N S A S

comprehensive
cancer

control &
prevention

KCP Accomplishments:

- Established Web site:
 - Provides portal for reliable cancer information
 - Home site for partnership meeting minutes and materials
 - News and information on the latest projects/initiatives
 - For example colorectal materials (news release, newsletter article and model project) during March
- Patient cancer screening assessment tool on web site in May 2007 – added radon questions May 2008

KCP Accomplishments:

- Piloted a patient navigation program in Wichita and working on tool kit to be posted on web site
- Training for HR professionals in the State on “TLC- Survivorship in the Workplace” and expansion of program to State agencies-
 - three trainings currently complete at KDHE
 - four trainings in D of A, July-Oct. 2008

K A N S A S

comprehensive
cancer

control &
prevention

What has the Partnership done the last three years?

- Working with Midwest Cancer Alliance-KU Medical Center on NCI designation
- New colorectal cancer awareness project in March 2008 involving paid advertising, education and awareness which partnered with 11 cancer centers located across the state

K A N S A S

comprehensive
cancer

control &
prevention

What has the Partnership done the last three years?

Research and Data issues

- Questions on 2007 survey on advance care planning, survivorship, skin cancer, clinical trials, caregiving
- Questions on 2008 survey on follow-up to skin cancer
- Radon and cancer- initial meeting in January 2008 and ongoing effort

K A N S A S

comprehensive
cancer

control &
prevention

KCP Accomplishments:

- 27 smoke/tobacco free communities statewide
- Supported radon legislation in 2008 session
- Established \$230,000 in State funding for the Early Detection Works Breast and Cervical Cancer Screening Program
- Sunwise -Skin cancer awareness project promoted through Coordinated School Hlth

K A N S A S

comprehensive
cancer

control &
prevention

What has the Partnership done the last three years?

- Developed Cancer Plan budget and strategized for funding opportunities
- Supported tobacco tax and clean indoor air
- Supported clinical trials legislation
- Developed colorectal cancer awareness and information project-March 2008

K A N S A S

comprehensive
cancer

control &
prevention

What has the Partnership done the last three years?

Policy issues

- Supported 21 recommendations from KHPA for 2008 session
- Established Kansans for Better Health-
 - Coordinated group of partnerships, coalitions and associations
 - Supports health care reform
 - Provided testimony and attended hearings during 2008 session

K A N S A S

comprehensive
cancer

control &
prevention

Where do we go from here?

- Recognize accomplishments
- Updating and revamping Plan
- Plan for future activities
- Legislative issues for 2009 session



K A N S A S

comprehensive
cancer

control &
prevention

What will it take?

- Continued commitment from YOU
- Support from organizations and communities
- Grassroots effort
- Timeline

K A N S A S

comprehensive
cancer

control &
prevention

Next Steps

- Update the Cancer Plan
- Reorganize and recruit more members for workgroups
- Workgroups meet monthly – Aug.- Dec.
- Advocacy/grassroots training- Fall 2008
- February 4, 2009- CCC Meeting

K A N S A S

comprehensive
cancer

control &
prevention